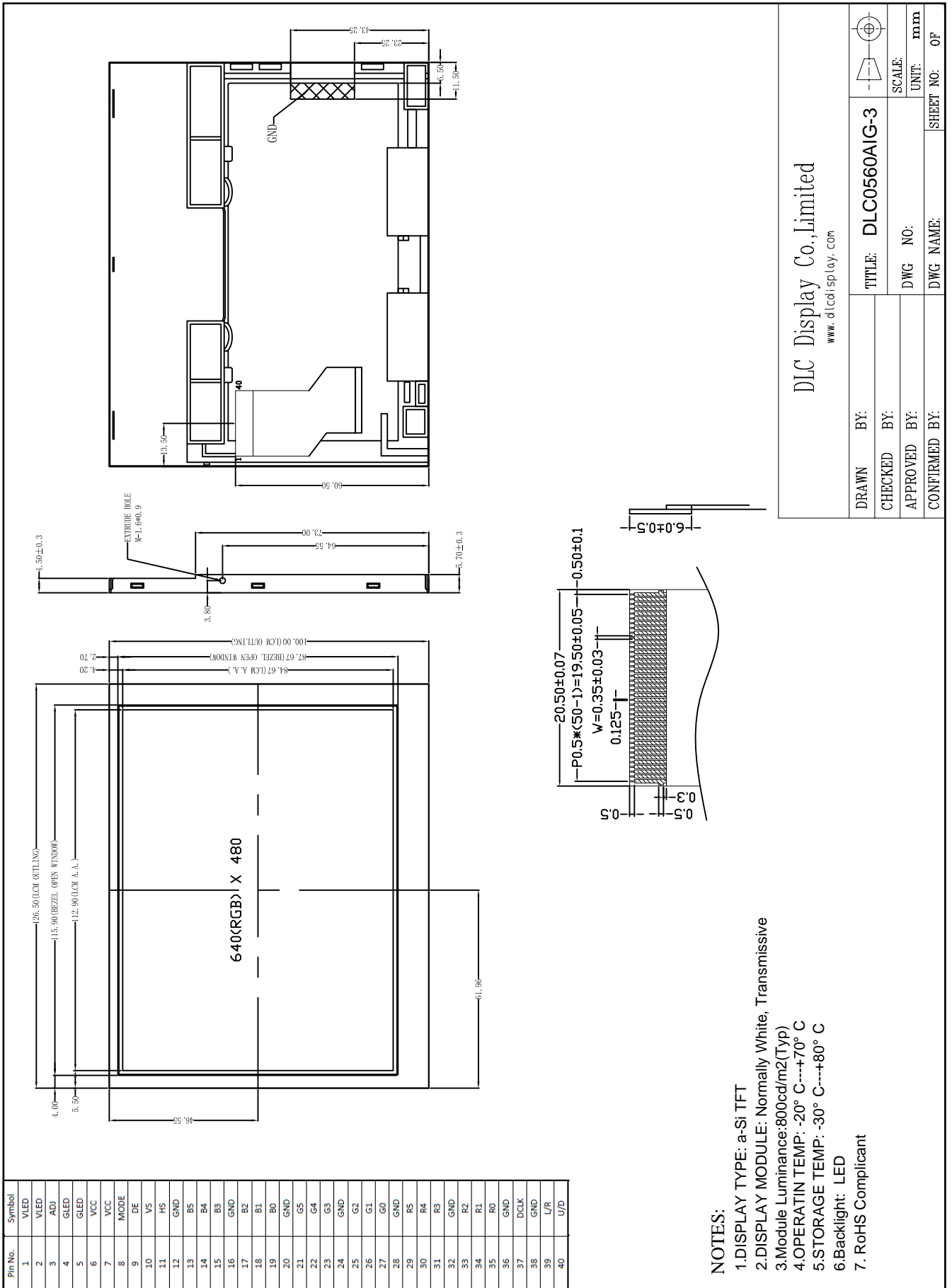


Outline Drawing



NOTES:

- 1.DISPLAY TYPE: a-Si TFT
- 2.DISPLAY MODULE: Normally White, Transmissive
- 3.Module Luminance:800cd/m2(Typ)
- 4.OPERATING TEMP: -20° C---+70° C
- 5.STORAGE TEMP: -30° C---+80° C
- 6.Backlight: LED
7. RoHS Compliant

DLC Display Co., Limited www.dlcdisplay.com		TITLE: DLC0560AIG-3	
DRAWN BY:		CHECKED BY:	
APPROVED BY:		DWG NO:	
CONFIRMED BY:		DWG NAME:	
		SCALE:	mm
		UNIT:	mm
		SHEET NO:	0F